

A PROPOSAL FOR COMMUNITY-BASED CONSERVATION AREA FOR TAPANULI ORANGUTAN

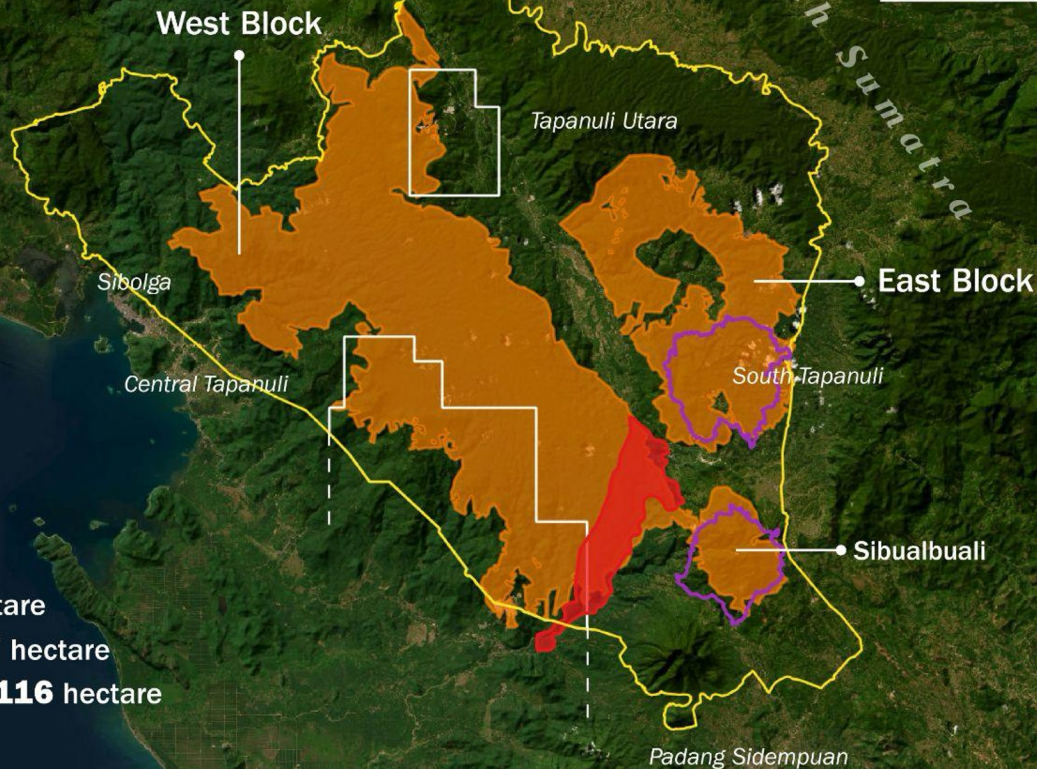


BATANG TORU LANDSCAPE

Only 6.5% of the Batang Toru Landscape designated for conservation area, while 14.2% has been allocated for mining and energy concessions.

Of orangutan tapanuli's habitat, it is only 12% in conservation area, while 26% are in mining & energy concession.

- Batang Toru Landscape: **234,695** hectare
- Tapanuli orangutan's habitat: **102,317** hectare
- Hydroelectric plant's impacted area: **6,116** hectare
- Conservation area: **12,241** hectare
- Mining concessions: **26,676** hectare

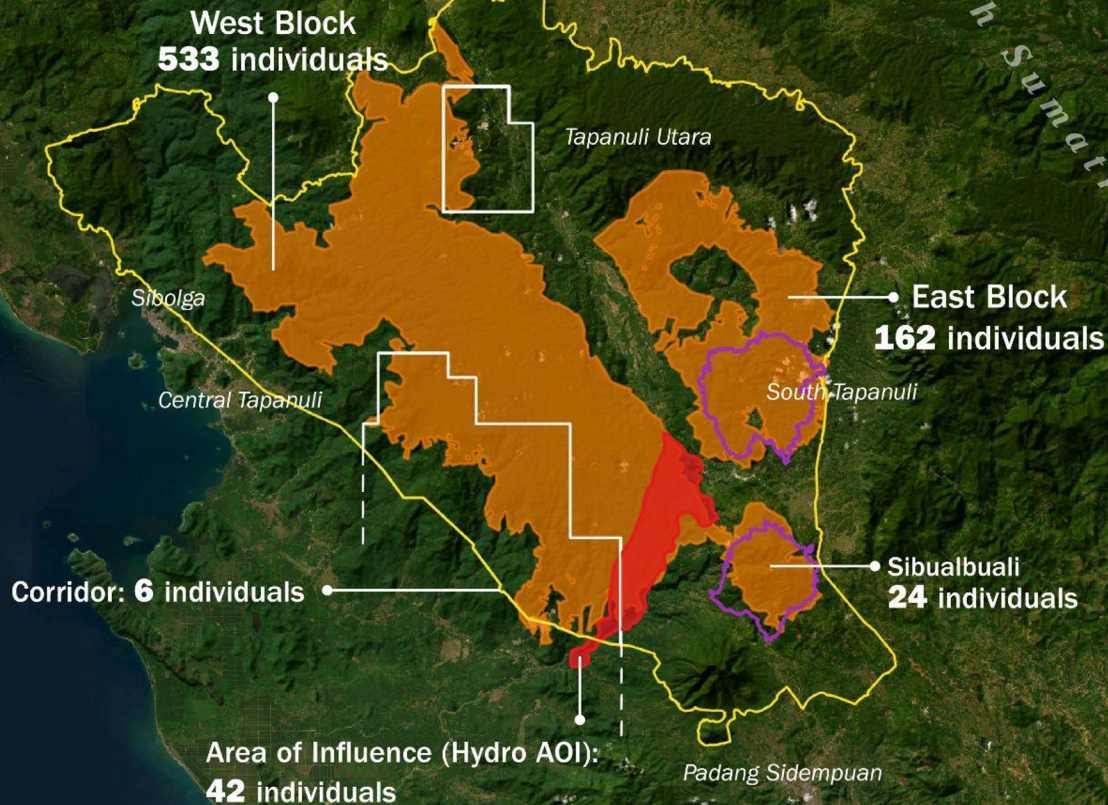


TAPANULI ORANGUTAN IN BATANG TORU LANDSCAPE

The Tapanuli orangutan can only be found in Batang Toru Landscape.

In 2000, the population are about 900-1,000 individuals.

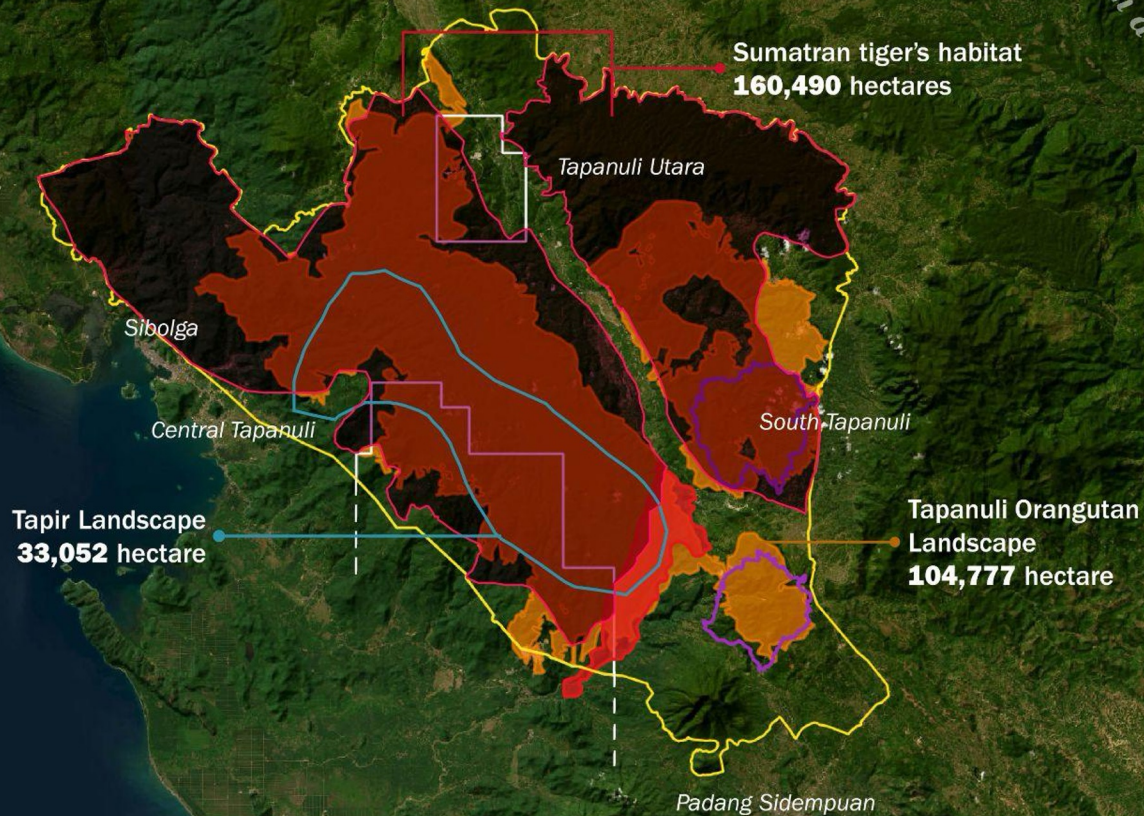
However, the current data indicates its decreasing, as estimated no more than 800 individuals.



FLAGSHIP SPECIES IN BATANG TORU LANDSCAPE

There are three large mammals in Batang Toru Landscape:

- **Tapanuli orangutan** in **44.6%** of the landscape
- **Sumatran tiger** in **68.4%** of the landscape,
- **Tapir** in **14.1%** of the landscape.

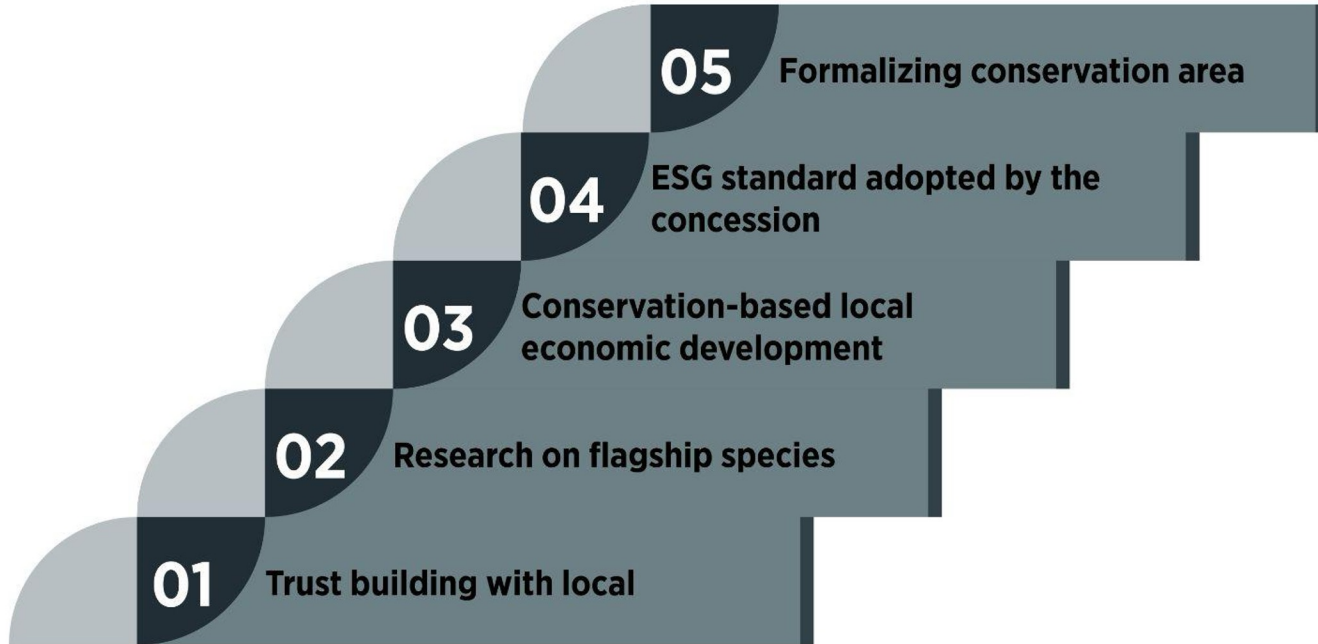


OPTIONS FOR BATANG TORU CONSERVATION AREA*

CONSERVATION AREA	ADVANTAGE	CONCERN
Wildlife Reserve (Suaka Margasatwa)	Wildlife-based management	<ul style="list-style-type: none"> • Too restricted → stimulate local resistance • Controlled by central government → probably not supported by local government • So far, no evidence of wildlife reserve's success story
National Park (Taman Nasional)	<ul style="list-style-type: none"> • Managed in zones that possibly accomodates various allocation, including species-based, local management area, etc • The management body is well-established 	<ul style="list-style-type: none"> • Controlled by central government → not supported by the local government, and stimulating resistance by the local community
Grand Forest Park (Taman Hutan Raya)	<ul style="list-style-type: none"> • Managed by local government • Managed in zones that possibly accommodates various allocation 	Uncertainty of long-term budget
Community Conservation Area	Hypotetically, if got genuine local's buy-in, bring a new model but succesfull conservation goal	<ul style="list-style-type: none"> • Not exist yet in Indonesia's legal system, but it is accepted in the draft of conservation law amendment • KLHK's resistance

*) cover the whole landscape

STEPS PROPOSED IN ESTABLISHING CONSERVATION PRACTICES IN BATANG TORU LANDSCAPE



Terima kasih

